

# auto electrical parts

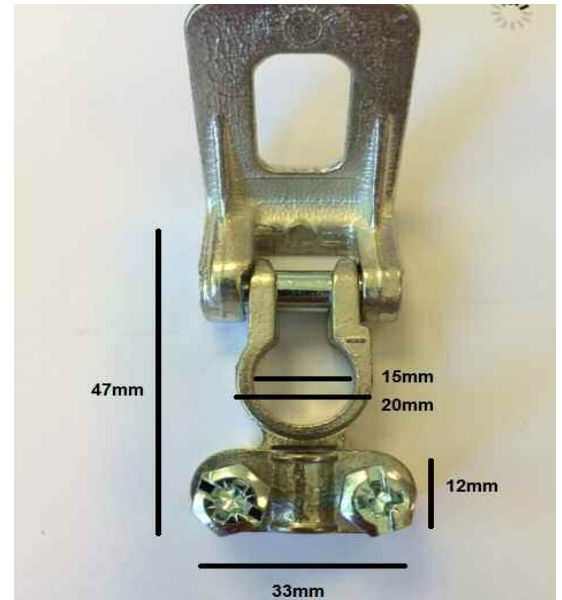
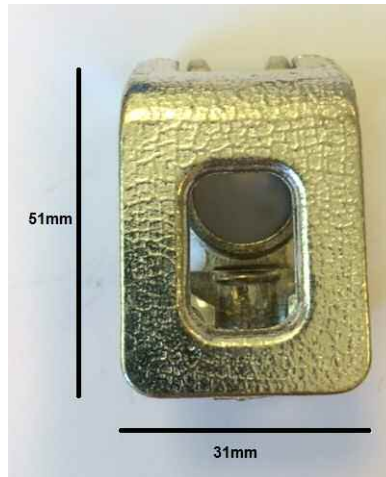
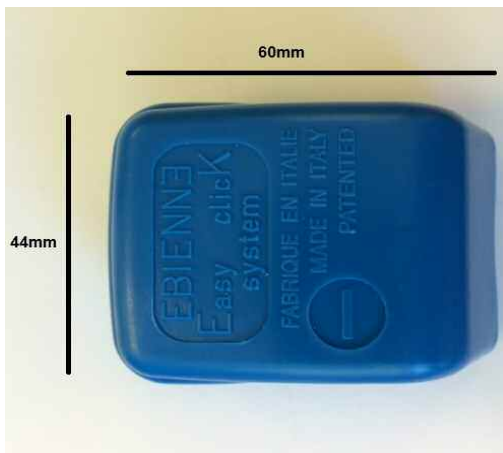
## Technical Information Sheet

### Part No. 0-023-00

Quick Release Battery Terminals - offering a practical solution to ordinary battery terminals by means of a quick release clamp mechanism to easily attach or detach the terminals from a vehicle battery.



### Technical Drawing (not to scale)



### Specification

Type	Quick Release Battery Terminals
Material	Natural Brass
Resistance Class	4.8
Tensile Strength for Traction	400N/mm <sup>2</sup>
Limit of Elasticity	320N/mm <sup>2</sup>
Minimum Elongation	14%
Electrical Conductivity	21%
Cover Material	Riblene MR30 Low Density Polyethylene
Density	(D1505) 0.924 G/CM <sup>3</sup>
Flammability Rating of Material	UL94 V-2
Max Amperage	1000Ah
Operating temperature	-40°C to +105°C
Max Cable Size	50mm <sup>2</sup>
Dimensions	See above
Approvals	UNI EN 1982:2000

The information contained in this document is correct to the best of our knowledge at the time of printing. However, specifications may change at any time without notice.